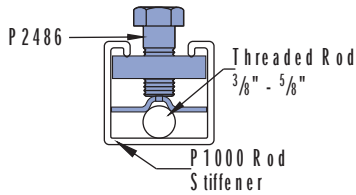
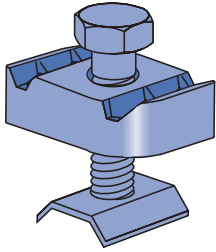
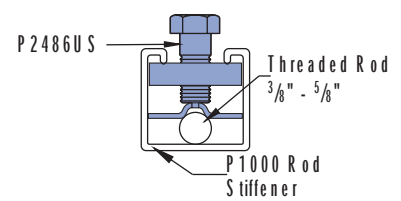
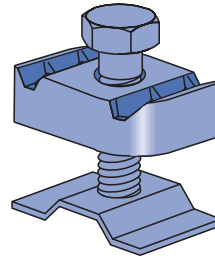


Rod Stiffeners

P2486 - SEISMIC ROD STIFFENER



P2486US - SEISMIC ROD STIFFENER



Material / Finish Specifications

Materials:

Channel Nut: ASTM A576 G1015 Mod.

Cap Screw: SAE J429 GR 2

Plate: ASTM A1011 SS GR 33

Finish: ASTM B633 Type III SC1 (EG)

Material / Finish Specifications

Materials:

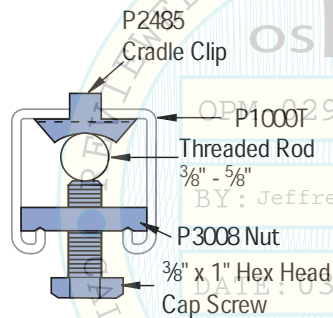
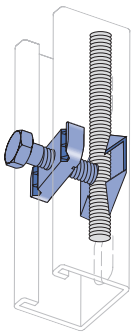
Channel Nut: ASTM A576 G1015 Mod.

Cap Screw: SAE J429 GR 2

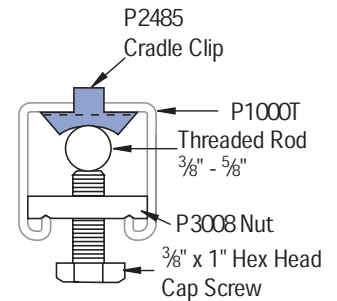
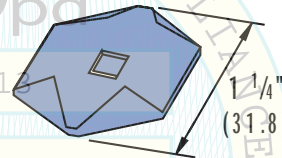
Plate: ASTM A1011 SS GR 33

Finish: ASTM B633 Type III SC1 (EG)

P2485K - CRADLE CLIP ASSEMBLY



P2485 - CRADLE CLIP



Cradle clip only, order other items separately.

Material / Finish Specifications

Materials:

Channel Nut: ASTM A675 GR 60

Cap Screw: SAE J429 GR 2

Cradle Clip: ASTM A366-85

Finish: ASTM B633 Type III SC1 (EG)

Material / Finish Specifications

Material: ASTM A366-85

Finish: ASTM B633 Type III SC1 (EG)



16100 S. Lathrop Ave
Harvey, IL 60426
Toll-Free: (800) 882-5543

www.unistrutseismic.com

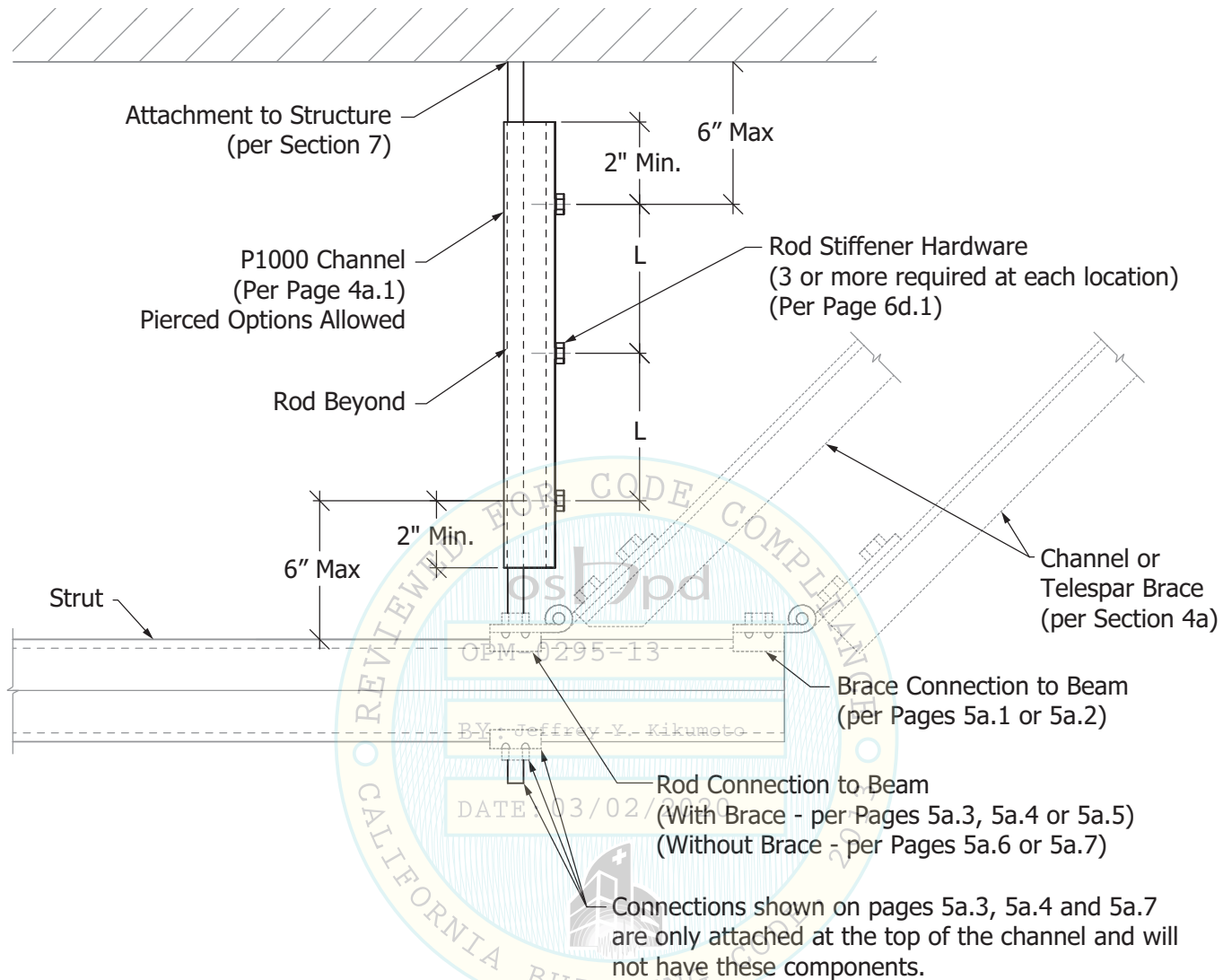
Structural Engineer: Rami Elhassan
California SE No. 3930

Page:

6d.1

Rod Stiffeners

ROD STIFFENER



Note:

- 1) Where the length of the rod is less than "L" and the max F_p Force is not exceeded per the tables on sheet 6d.3, rod stiffeners and strut are not required. If the length of the rod exceeds 30", a rod stiffener will be required.

Atkore
Unistrut

16100 S. Lathrop Ave
Harvey, IL 60426
Toll-Free: (800) 882-5543

www.unistrutseismic.com

Structural Engineer: Rami Elhassan
California SE No. 3930

Page:

6d.2

Rod Stiffeners

Maximum Horizontal F_p Force (lbs.) ASD						
3/8" Diameter Rod	"L" Clip/Bolt Spacing (in.)	Max Total Rod Length (ft.)	Lateral Brace Angle (Deg.)			
			0° +5° / -0° (Horizontal)	30° +5° / -25°	45° +5° / -10°	60° +0° / -10°
			Brace Capacity Governs (See Section 3 for Maximum Horizontal F_p Force for Brace)			
685	402	277				
438	258	177				
304	179	123				
224	131	90				
171	101	69				
135	79	55				
110	64	44				

Maximum Horizontal F_p Force (lbs.) ASD						
1/2" Diameter Rod	"L" Clip/Bolt Spacing (in.)	Max Total Rod Length (ft.)	Lateral Brace Angle (Deg.)			
			0° +5° / -0° (Horizontal)	30° +5° / -25°	45° +5° / -10°	60° +0° / -10°
			Brace Capacity Governs (See Section 3 for Maximum Horizontal F_p Force for Brace)			
2,176	1,279	880				
1,472	865	595				
1,022	601	413				
751	441	304				
575	338	233				
368	216	149				
256	150	103				
245	144	99				

Maximum Horizontal F_p Force (lbs.) ASD						
5/8" Diameter Rod	"L" Clip/Bolt Spacing (in.)	Max Total Rod Length (ft.)	Lateral Brace Angle (Deg.)			
			0° +5° / -0° (Horizontal)	30° +5° / -25°	45° +5° / -10°	60° +0° / -10°
			Brace Capacity Governs (See Section 3 for Maximum Horizontal F_p Force for Brace)			
2,599	1,527	1,051				
1,462	859	591				
936	550	378				
650	382	263				
365	215	148				
333	196	135				



16100 S. Lathrop Ave
Harvey, IL 60426
Toll-Free: (800) 882-5543

www.unistrutseismic.com

Structural Engineer: Rami Elhassan
California SE No. 3930

Page:

6d.3